



LumaCell™  
Cellular longevity enhancer

**CAMBRIUM**

## Longevity at a cellular level

LumaCell™ is a high-performance active designed to revitalize the skin through a comprehensive “cellular-to-surface” approach. By addressing oxidative stress and metabolic depletion at the molecular level, it delivers visible improvements in barrier resilience and enhances the skin glow.

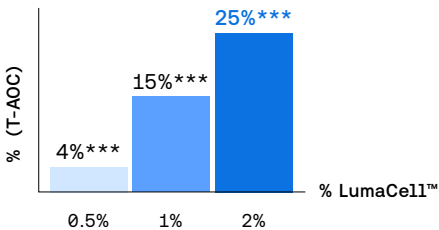
### Neutralizes ROS

It acts as a strong scavenger, neutralizing up to 25.4% of Reactive Oxygen Species (ROS).

### Protects DNA

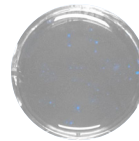
Protects de cells from external stressors, enabling the proliferation of healthy cells.

In-vitro



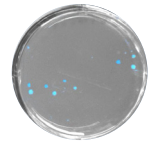
In-vitro

Treated with UVA



No growth

Treated with UVA  
+ LumaCell™

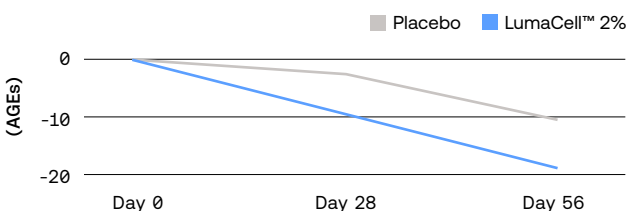


+191 growth

### Decreases AGEs

By mitigation oxidative stress and DNA damage, it achieves a 19.1% reduction in Advanced Glycation End-Products (AGEs) after 56 days.

In vivo

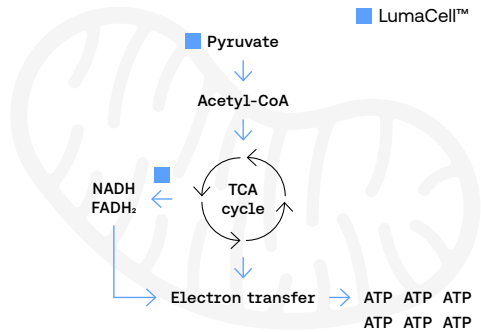


Reduction in AGEs

**-19%\*\*\***

## Power the cell

LumaCell™ is a source of Pyruvate and NAD+ that directly feeds the Tricarboxylic Acid Cycle, thus fueling the cell.



## Prolong the glow

"Glow" is the visual evidence of a cell that is both protected and powered.

In vivo

**-22%\*\*\*** Reduction in Trans Epidermal Water Loss for barrier strength

**+41%\*\*\*** Improves skin firmness for more youthful texture

**+23%\*\*\*** Increase in hydration for smoothness and elasticity

**+18%\*\*\*** Increase in glow for long lasting luminosity





Day 0



Day 56

# Product specifications

LumaCell™ INCI List	Pending
Physiochemical properties	Liquid formula, water soluble, mild odour, pale yellow
Shelf life	2 years
Recommended usage level	2%
Recommended pH level	3.5 to 7
Temperature stability	Up to 60°C
Certifications	Natural Origin Content = 100% COSMOS: Pending OK World



## Engineering materials that outperform.

Your body is intelligent. It knows what belongs and what doesn't. That's why we engineer actives that work with your biology, not against it. Peptides and proteins designed to mirror what your body already makes.

The result is efficacy that synthetic chemistry can't match: deeper absorption, stronger signaling, real results. From skin to hair and beyond. Vegan, cruelty free, biocompatible, and built for performance. Personal care, elevated at the molecular level.

### Contact details

Sarah Valensi - Sales Manager  
sales@cambrium.bio



# CAMBRIUM